

CODE **9**

PAPER-1

P1-14-9

1118019

Time : 3 Hours

Maximum Marks : 180

Please read the instructions carefully. You are allotted 5 minutes specifically for this purpose.

INSTRUCTIONS

A. General

1. This booklet is your Question Paper. Do not break the seal of this booklet before being instructed to do so by the invigilators.
2. The question paper CODE is printed on the left hand top corner of this sheet and on the back cover page of this booklet.
3. Blank spaces and blank pages are provided in the question paper for your rough work. No additional sheets will be provided for rough work.
4. Blank papers, clipboards, log tables, slide rules, calculators, cameras, cellular phones, pagers and electronic gadget of any kind are NOT allowed inside the examination hall.
5. Write your Name and Roll number in the space provided on the back cover of this booklet.
6. Answers to the questions and personal details are to be filled on an Optical Response Sheet, which is provided separately. The ORS is a doublet of two sheets - upper and lower, having identical layout. The upper sheet is a machine-gradable Objective Response Sheet (ORS) which will be collected by the invigilator at the end of the examination. The upper sheet is designed in such a way that darkening the bubble with a ball point pen will leave an identical impression at the corresponding place on the lower sheet. You will be allowed to take away the lower sheet at the end of the examination. (see Figure-1 on the back cover page for the correct way of darkening the bubbles for valid answers).
7. **Use a black ball point pen only to darken the bubbles on the upper original sheet.** Apply sufficient pressure so that the impression is created on the lower sheet. See Figure-1 on the back cover page for appropriate way of darkening the bubbles for valid answers.
8. **DO NOT TAMPER WITH / MUTILATE THE ORS OR THIS BOOKLET.**
9. On breaking the seal of the booklet check that it contains **28** pages and all the **60** questions and corresponding answer choices are legible. Read carefully the instruction printed at the beginning of each section.

B. Filling the right part of the ORS

10. The ORS also has a **CODE** printed on its left and right parts.
11. Verify that the **CODE** printed on the ORS (on both the left and right parts) is the same as that on this booklet and put your signature in the Box designated as R4.
12. **IF THE CODES DO NOT MATCH, ASK FOR A CHANGE OF THE BOOKLET / ORS AS APPLICABLE.**
13. Write your Name, Roll No. and the name of centre and sign with pen in the boxes provided on the upper sheet of ORS. **Do not write any of this anywhere else.** Darken the appropriate bubble **UNDER** each digit of your Roll No. in such way that the impression is created on the bottom sheet. (see example in Figure 2 on the back cover)

C. Question Paper Format

The question paper consists of **three parts** (Physics, Chemistry and Mathematics). Each part consists of two sections.

14. **Section 1** contains **10 multiple choice questions**. Each question has four choices (A), (B), (C) and (D) out of which **ONE OR MORE THAN ONE are correct**.
15. **Section 2** contains **10 questions**. The answer to each of the questions is a single-digit integer, ranging from 0 to 9 (both inclusive).

DO NOT BREAK THE SEAL WITHOUT BEING INSTRUCTED TO DO SO BY THE INVIGILATOR



Please read the last page of this booklet for rest of the instructions.

	Subject	Section		Page No.
Part I	Physics	1	One or More Than One Option Correct Type	3 - 7
		2	One Integer Value Correct Type	8 - 12
Part II	Chemistry	1	One or More Than One Option Correct Type	13 - 17
		2	One Integer Value Correct Type	18 - 19
Part III	Mathematics	1	One or More Than One Option Correct Type	20 - 23
		2	One Integer Value Correct Type	24 - 26

Space for Rough Work

$$f = 244 \delta^{-1}$$

$$\frac{10}{179}$$

$$\begin{array}{r} 0.5 \\ \times 179 \\ \hline 895 \\ \hline 179 \\ \hline \end{array}$$



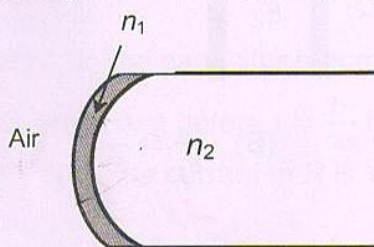
PART I : PHYSICS

SECTION – 1 : (One or More Than One Options Correct Type)

This section contains 10 multiple choice questions. Each question has four choices (A), (B), (C) and (D) out of which ONE or MORE THAN ONE are correct.

1. A transparent thin film of uniform thickness and refractive index $n_1 = 1.4$ is coated on the convex spherical surface of radius R at one end of a long solid glass cylinder of refractive index $n_2 = 1.5$, as shown in the figure. Rays of light parallel to the axis of the cylinder traversing through the film from air to glass get focused at distance f_1 from the film, while rays of light traversing from glass to air get focused at distance f_2 from the film. Then

- (A) $|f_1| = 3R$
 (B) $|f_1| = 2.8R$
 (C) $|f_2| = 2R$
 (D) $|f_2| = 1.4R$



2. A student is performing an experiment using a resonance column and a tuning fork of frequency 244 s^{-1} . He is told that the air in the tube has been replaced by another gas (assume that the column remains filled with the gas). If the minimum height at which resonance occurs is $(0.350 \pm 0.005) \text{ m}$, the gas in the tube is

(Useful information : $\sqrt{167RT} = 640 \text{ J}^{1/2} \text{ mole}^{-1/2}$; $\sqrt{140RT} = 590 \text{ J}^{1/2} \text{ mole}^{-1/2}$. The molar masses M in grams are given in the options. Take the values of $\sqrt{\frac{10}{M}}$ for each gas as given there.)

- (A) Neon ($M = 20, \sqrt{\frac{10}{20}} = \frac{7}{10}$)
 (B) Nitrogen ($M = 28, \sqrt{\frac{10}{28}} = \frac{3}{5}$)
 (C) Oxygen ($M = 32, \sqrt{\frac{10}{32}} = \frac{9}{16}$)
 (D) Argon ($M = 36, \sqrt{\frac{10}{36}} = \frac{17}{32}$)

Space for Rough Work

$$\frac{1}{f_1} = \left(\frac{n_2}{n_1} - 1 \right) \left(\frac{1}{R_1} - \frac{1}{R_2} \right)$$

$$\frac{1}{f_1} = (0.6) \left[\frac{1}{R} \right]$$

$$f_1 = \frac{R \times 1051.6}{583}$$

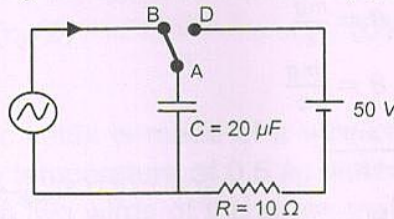
$$\frac{1}{f_2} = \left(\frac{1.5}{1.4} - 1 \right) \left(\frac{1}{R} \right)$$

$$\frac{1}{f_2} = \frac{0.51}{1.4} \times \frac{1}{R}$$

$$3 f_2 = 14R$$



5. At time $t = 0$, terminal A in the circuit shown in the figure is connected to B by a key and an alternating current $I(t) = I_0 \cos(\omega t)$, with $I_0 = 1A$ and $\omega = 500 \text{ rad s}^{-1}$ starts flowing in it with the initial direction shown in the figure. At $t = \frac{7\pi}{6\omega}$, the key is switched from B to D. Now onwards only A and D are connected. A total charge Q flows from the battery to charge the capacitor fully. If $C = 20 \mu F$, $R = 10 \Omega$ and the battery is ideal with *emf* of $50V$, identify the correct statement (s).



- (A) Magnitude of the maximum charge on the capacitor before $t = \frac{7\pi}{6\omega}$ is $1 \times 10^{-3} C$.
 (B) The current in the left part of the circuit just before $t = \frac{7\pi}{6\omega}$ is clockwise.
 (C) Immediately after A is connected to D, the current in R is $10A$.
 (D) $Q = 2 \times 10^{-3} C$.
6. A light source, which emits two wavelengths $\lambda_1 = 400 \text{ nm}$ and $\lambda_2 = 600 \text{ nm}$, is used in a Young's double slit experiment. If recorded fringe widths for λ_1 and λ_2 are β_1 and β_2 and the number of fringes for them within a distance y on one side of the central maximum are m_1 and m_2 , respectively, then
- (A) $\beta_2 > \beta_1$
 (B) $m_1 > m_2$
 (C) From the central maximum, 3rd maximum of λ_2 overlaps with 5th minimum of λ_1
 (D) The angular separation of fringes for λ_1 is greater than λ_2

Space for Rough Work

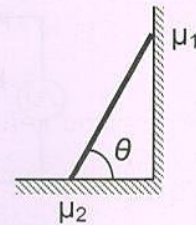
$I(t) = 1 \cos 500t$
 $C = \frac{Q}{V}$
 $X_C = \frac{1}{\omega C}$
 $\omega \times \frac{7\pi}{6}$
 $I(t) = 1$
 $C = \frac{Q}{V}$
 $V = I \times R$
 $50 = I \times 10$
 $\Delta x = n \lambda$
 $\beta = \frac{\lambda D}{d}$

$C = \frac{Q}{V}$
 $20 \times 10^{-6} = \frac{2 \times 10^{-3}}{V}$
 $V = 100$
 $50 = I \times 10$



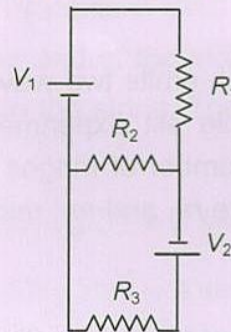
7. In the figure, a ladder of mass m is shown leaning against a wall. It is in static equilibrium making an angle θ with the horizontal floor. The coefficient of friction between the wall and the ladder is μ_1 and that between the floor and the ladder is μ_2 . The normal reaction of the wall on the ladder is N_1 and that of the floor is N_2 . If the ladder is about to slip, then

- (A) $\mu_1 = 0$ $\mu_2 \neq 0$ and $N_2 \tan \theta = \frac{mg}{2}$
- (B) $\mu_1 \neq 0$ $\mu_2 = 0$ and $N_1 \tan \theta = \frac{mg}{2}$
- (C) $\mu_1 \neq 0$ $\mu_2 \neq 0$ and $N_2 = \frac{mg}{1 + \mu_1 \mu_2}$
- (D) $\mu_1 = 0$ $\mu_2 \neq 0$ and $N_1 \tan \theta = \frac{mg}{2}$

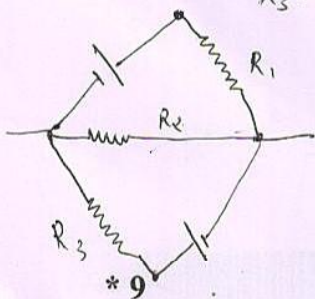
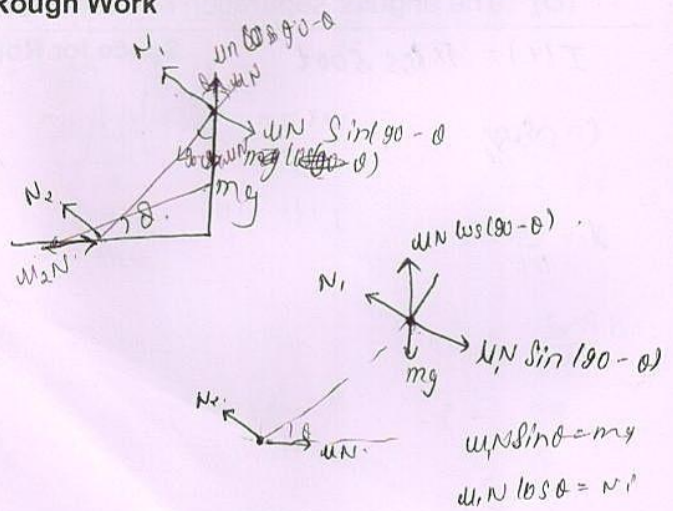
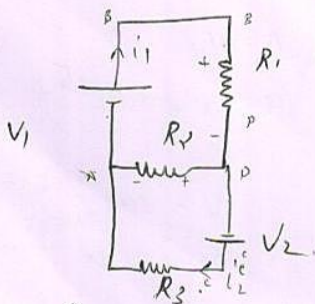


8. Two ideal batteries of emf V_1 and V_2 and three resistances R_1 , R_2 and R_3 are connected as shown in the figure. The current in resistance R_2 would be zero if

- (A) $V_1 = V_2$ and $R_1 = R_2 = R_3$
- (B) $V_1 = V_2$ and $R_1 = 2R_2 = R_3$
- (C) $V_1 = 2V_2$ and $2R_1 = 2R_2 = R_3$
- (D) $2V_1 = V_2$ and $2R_1 = R_2 = R_3$



Space for Rough Work



$$V_1 - i_1 R_1 - i_2 R_2 + i_3 R_3 = 0$$

$$V_2 - i_3 R_3 - i_2 R_2 + i_1 R_2 = 0$$

6

$$i_1 R_1 + i_1 R_2 - i_2 R_2 = i_3 R_3 + i_2 R_2 - i_1 R_2$$



9. Let $E_1(r)$, $E_2(r)$ and $E_3(r)$ be the respective electric fields at a distance r from a point charge Q , an infinitely long wire with constant linear charge density λ , and an infinite plane with uniform surface charge density σ . If $E_1(r_0) = E_2(r_0) = E_3(r_0)$ at a given distance r_0 , then

(A) $Q = 4\sigma\pi r_0^2$

(B) $r_0 = \frac{\lambda}{2\pi\sigma}$

(C) $E_1(r_0/2) = 2E_2(r_0/2)$

(D) $E_2(r_0/2) = 4E_3(r_0/2)$

10. Heater of an electric kettle is made of a wire of length L and diameter d . It takes 4 minutes to raise the temperature of 0.5 kg water by 40 K. This heater is replaced by a new heater having two wires of the same material, each of length L and diameter $2d$. The way these wires are connected is given in the options. How much time in minutes will it take to raise the temperature of the same amount of water by 40 K?

(A) 4 if wires are in parallel

(B) 2 if wires are in series

(C) 1 if wires are in series

(D) 0.5 if wires are in parallel

Space for Rough Work

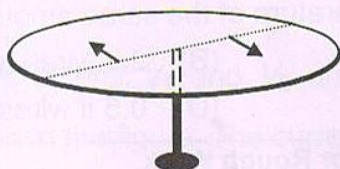
$E_1(r) \Rightarrow \frac{kQ}{r^2}$
 $E_2 = \frac{\lambda}{2\pi r}$
 $E_3 = \frac{\sigma}{2\epsilon_0}$
 $t = 4 \text{ m}$
 $m = 0.5$
 $\Delta T = 40 \text{ K}$
 $R = \frac{80 l}{4 \pi d^2}$
 $R_2 = \frac{l l}{16 \pi d^2} + \frac{l l}{4 \pi d^2}$
 $\frac{50 l}{16 \pi d^2}$
 3.5



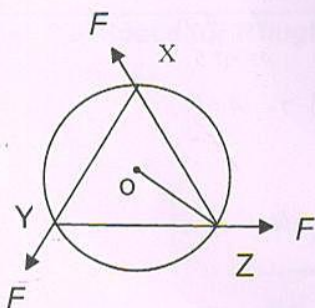
SECTION – 2 : (One Integer Value Correct Type)

This section contains 10 questions. Each question, when worked out will result in one integer from 0 to 9 (both inclusive).

11. A horizontal circular platform of radius 0.5 m and mass 0.45 kg is free to rotate about its axis. Two massless spring toy-guns, each carrying a steel ball of mass 0.05 kg are attached to the platform at a distance 0.25 m from the centre on its either sides along its diameter (see figure). Each gun simultaneously fires the balls horizontally and perpendicular to the diameter in opposite directions. After leaving the platform, the balls have horizontal speed of 9 ms^{-1} with respect to the ground. The rotational speed of the platform in rad s^{-1} after the balls leave the platform is



12. A uniform circular disc of mass 1.5 kg and radius 0.5 m is initially at rest on a horizontal frictionless surface. Three forces of equal magnitude $F = 0.5\text{ N}$ are applied simultaneously along the three sides of an equilateral triangle XYZ with its vertices on the perimeter of the disc (see figure). One second after applying the forces, the angular speed of the disc in rad s^{-1} is



Space for Rough Work

$$\frac{W}{r} = \frac{V \times \omega}{r}$$

$$\frac{9 \times 2 \times 1000}{0.25} = \omega \times 9$$

$$r = 0.5\text{ m}$$

$$m = 0.45\text{ kg}$$

$$a_t = \alpha r$$

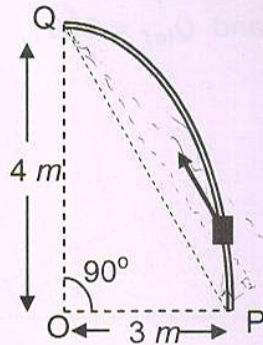
$$\alpha = \frac{a_t}{r}$$

$$a_t = \frac{W \times g}{F}$$

$$\frac{9 \times 9}{0.5}$$



13. Consider an elliptically shaped rail PQ in the vertical plane with OP = 3 m and OQ = 4 m. A block of mass 1 kg is pulled along the rail from P to Q with a force of 18 N, which is always parallel to line PQ (see the figure given). Assuming no frictional losses, the kinetic energy of the block when it reaches Q is (n × 10) Joules. The value of n is (take acceleration due to gravity = 10 ms⁻²)



14. A galvanometer gives full scale deflection with 0.006 A current. By connecting it to a 4990 Ω resistance, it can be converted into a voltmeter of range 0 - 30 V. If connected to a $\frac{2n}{249}$ Ω resistance, it becomes an ammeter of range 0 - 1.5 A. The value of n is

Space for Rough Work

$I_g = 0.006$

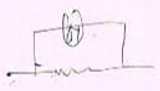
[0, 30V]

$R = 4990$

$V = I(G + R)$

$S = \frac{2n}{249}$

$30 = \frac{0.006}{1000} [4990 + G]$



$I \times G = I \times R$

$5000 - 4990 = G$

$G = 10 \Omega$

$0.006 \times 10 = \frac{1.5 \times 2n}{10 \times 249}$

$\frac{2n}{1000} \times 10 = \frac{1.5 \times 2n}{10 \times 249}$

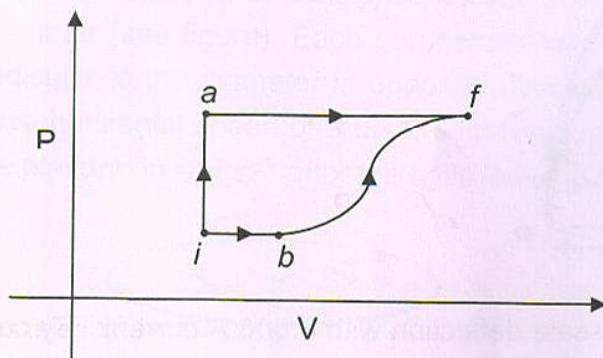
$0.06 \times 249 = n$

$5 \frac{30}{6} = n$

$\frac{12}{172}$



15. A thermodynamic system is taken from an initial state i with internal energy $U_i = 100 \text{ J}$ to the final state f along two different paths iaf and ibf , as schematically shown in the figure. The work done by the system along the paths af , ib and bf are $W_{af} = 200 \text{ J}$, $W_{ib} = 50 \text{ J}$ and $W_{bf} = 100 \text{ J}$ respectively. The heat supplied to the system along the path iaf , ib and bf are Q_{iaf} , Q_{ib} and Q_{bf} respectively. If the internal energy of the system in the state b is $U_b = 200 \text{ J}$ and $Q_{iaf} = 500 \text{ J}$, the ratio Q_{bf}/Q_{ib} is

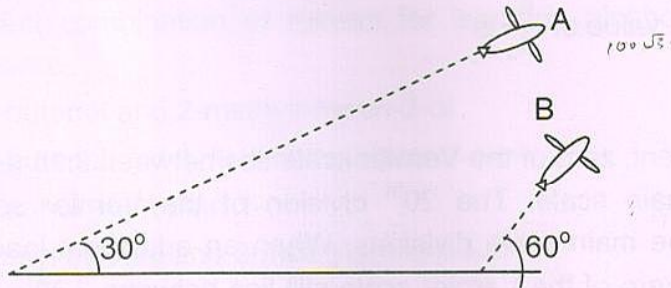


16. To find the distance d over which a signal can be seen clearly in foggy conditions, a railways engineer uses dimensional analysis and assumes that the distance depends on the mass density ρ of the fog, intensity (power/area) S of the light from the signal and its frequency f . The engineer finds that d is proportional to $S^{1/n}$. The value of n is

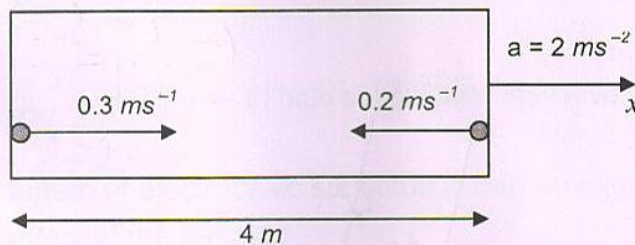
Space for Rough Work



17. Airplanes A and B are flying with constant velocity in the same vertical plane at angles 30° and 60° with respect to the horizontal respectively as shown in figure. The speed of A is $100\sqrt{3} \text{ ms}^{-1}$. At time $t = 0 \text{ s}$, an observer in A finds B at a distance of 500 m . This observer sees B moving with a constant velocity perpendicular to the line of motion of A. If at $t = t_0$, A just escapes being hit by B, t_0 in seconds is



18. A rocket is moving in a gravity free space with a constant acceleration of 2 ms^{-2} along $+x$ direction (see figure). The length of a chamber inside the rocket is 4 m . A ball is thrown from the left end of the chamber in $+x$ direction with a speed of 0.3 ms^{-1} relative to the rocket. At the same time, another ball is thrown in $-x$ direction with a speed of 0.2 ms^{-1} from its right end relative to the rocket. The time in seconds when the two balls hit each other is



Space for Rough Work



19. Two parallel wires in the plane of the paper are distance X_0 apart. A point charge is moving with speed u between the wires in the same plane at a distance X_1 from one of the wires. When the wires carry current of magnitude I in the same direction, the radius of curvature of the path of the point charge is R_1 . In contrast, if the currents I in the two wires have directions opposite to each other, the radius of curvature of the path is R_2 . If $\frac{X_0}{X_1} = 3$, the value of $\frac{R_1}{R_2}$ is
20. During Searle's experiment, zero of the Vernier scale lies between $3.20 \times 10^{-2} m$ and $3.25 \times 10^{-2} m$ of the main scale. The 20th division of the Vernier scale exactly coincides with one of the main scale divisions. When an additional load of 2 kg is applied to the wire, the zero of the Vernier scale still lies between $3.20 \times 10^{-2} m$ and $3.25 \times 10^{-2} m$ of the main scale but now the 45th division of Vernier scale coincides with one of the main scale divisions. The length of the thin metallic wire is 2 m and its cross-sectional area is $8 \times 10^{-7} m^2$. The least count of the Vernier scale is $1.0 \times 10^{-5} m$. The maximum percentage error in the Young's modulus of the wire is

Space for Rough Work

$$\frac{v_1}{v_2} = \frac{B_2}{B_1}$$

$$= \frac{X_1 + X - X_1}{(X - X_1)(X_1)}$$

$$= \frac{X_1 - X + X_1}{(X - X_1)(X_1)}$$

$$= \frac{2X_1}{(X - X_1)(X_1)}$$

$$\frac{mv^2}{qB} = R$$

$$v = \frac{mv}{qB}$$

$$B_1 = \frac{\mu_0 I}{2\pi(X - X_1)} + \frac{\mu_0 I}{2\pi X_1}$$

$$B_2 = \frac{\mu_0 I}{2\pi(X - X_1)} - \frac{\mu_0 I}{2\pi X_1}$$

$$\frac{v_1}{v_2} = \frac{R_2}{R_1}$$

$$R_1 = \frac{mv}{qB_1}$$

$$R_2 = \frac{mv}{qB_2}$$

$$\frac{R_1}{R_2} = \frac{B_2}{B_1}$$

$$= \frac{\frac{\mu_0 I}{2\pi(X - X_1)} - \frac{\mu_0 I}{2\pi X_1}}{\frac{\mu_0 I}{2\pi(X - X_1)} + \frac{\mu_0 I}{2\pi X_1}}$$

$$= \frac{X_1 - (X - X_1)}{X_1 + (X - X_1)}$$

$$= \frac{2X_1 - X + X_1}{X_1 + X - X_1}$$

$$= \frac{3X_1 - X}{X_1 + X - X_1}$$

$$\frac{3X_1 - X}{X_1 + X - X_1} = 3$$

$$3X_1 - X = 3X_1 + 3X - 3X_1$$

$$-X = 3X$$

$$-4X = 0$$

$$\frac{R_1}{R_2} = 3$$



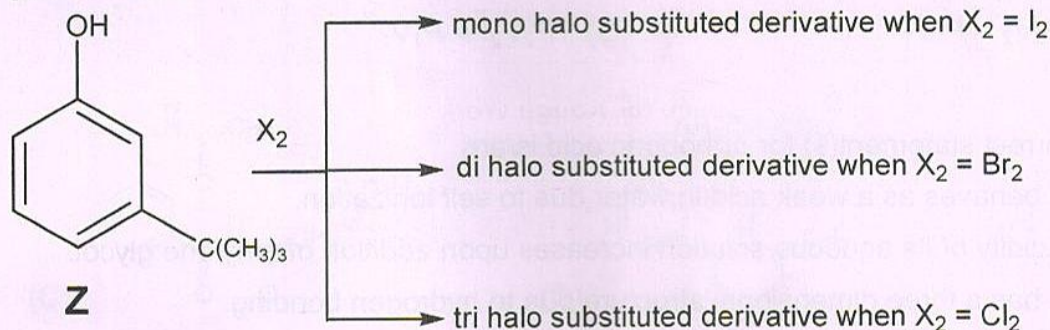
PART II : CHEMISTRY

SECTION – 1 : (One or More Than One Options Correct Type)

This section contains 10 multiple choice type questions. Each question has four choices (A), (B), (C) and (D) out of which ONE or MORE THAN ONE are correct.

21. The correct combination of names for isomeric alcohols with molecular formula $C_4H_{10}O$ is/are
- (A) *tert*-butanol and 2-methylpropan-2-ol
 - (B) *tert*-butanol and 1, 1-dimethylethan-1-ol
 - (C) *n*-butanol and butan-1-ol
 - (D) isobutyl alcohol and 2-methylpropan-1-ol

22. The reactivity of compound **Z** with different halogens under appropriate conditions is given below :



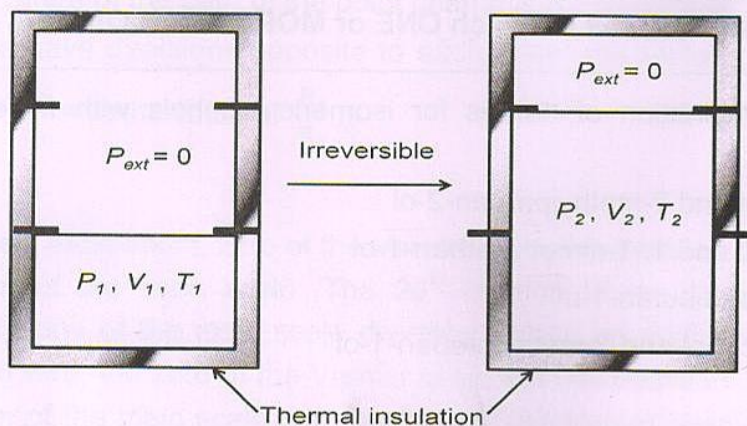
The observed pattern of electrophilic substitution can be explained by

- (A) the steric effect of the halogen
- (B) the steric effect of the *tert*-butyl group
- (C) the electronic effect of the phenolic group
- (D) the electronic effect of the *tert*-butyl group

Space for Rough Work



23. An ideal gas in a thermally insulated vessel at internal pressure = P_1 , volume = V_1 and absolute temperature = T_1 expands irreversibly against zero external pressure, as shown in the diagram. The final internal pressure, volume and absolute temperature of the gas are P_2 , V_2 and T_2 , respectively. For this expansion,



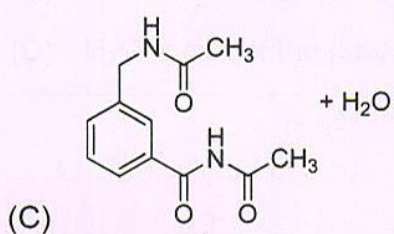
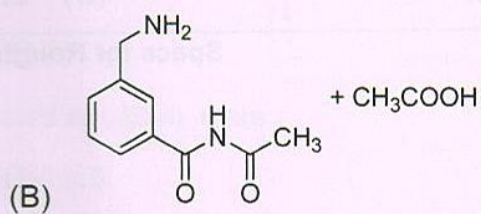
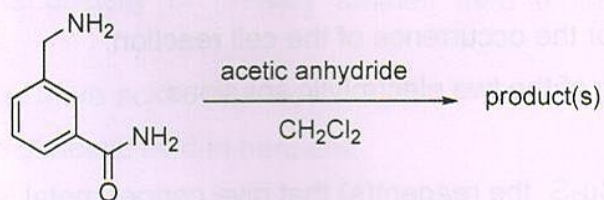
- (A) $q = 0$ (B) $T_2 = T_1$
 (C) $P_2V_2 = P_1V_1$ (D) $P_2V_2^\gamma = P_1V_1^\gamma$
24. The correct statement(s) for orthoboric acid is/are
 (A) It behaves as a weak acid in water due to self ionization.
 (B) Acidity of its aqueous solution increases upon addition of ethylene glycol.
 (C) It has a three dimensional structure due to hydrogen bonding.
 (D) It is a weak electrolyte in water.
25. The pair(s) of reagents that yield paramagnetic species is/are
 (A) Na and excess of NH_3
 (B) K and excess of O_2
 (C) Cu and dilute HNO_3
 (D) O_2 and 2-ethylantraquinol

Space for Rough Work

$PV = nRT$
 $P^{-\gamma} T^\gamma = P_1^{-\gamma} T_1^\gamma$
 $4S'3d'10$
 $2 \times T$



26. In the reaction shown below, the major product(s) formed is/are



Space for Rough Work

CHEMISTRY



27. In a galvanic cell, the salt bridge
- (A) does not participate chemically in the cell reaction.
 - (B) stops the diffusion of ions from one electrode to another.
 - (C) is necessary for the occurrence of the cell reaction.
 - (D) ensures mixing of the two electrolytic solutions.
28. Upon heating with Cu_2S , the reagent(s) that give copper metal is/are
- (A) CuFeS_2
 - (B) CuO
 - (C) Cu_2O
 - (D) CuSO_4

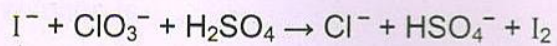
Space for Rough Work



29. Hydrogen bonding plays a central role in the following phenomena:

- (A) Ice floats in water.
- (B) Higher Lewis basicity of primary amines than tertiary amines in aqueous solutions.
- (C) Formic acid is more acidic than acetic acid.
- (D) Dimerisation of acetic acid in benzene.

30. For the reaction :



The correct statement(s) in the balanced equation is/are :

- (A) Stoichiometric coefficient of HSO_4^- is 6.
- (B) Iodide is oxidized.
- (C) Sulphur is reduced.
- (D) H_2O is one of the products.

Space for Rough Work



SECTION – 2 : (One Integer Value Correct Type)

This section contains 10 questions. Each question, when worked out will result in one integer from 0 to 9 (both inclusive).

31. A list of species having the formula XZ_4 is given below.
 XeF_4 , SF_4 , SiF_4 , BF_4^- , BrF_4^- , $[Cu(NH_3)_4]^{2+}$, $[FeCl_4]^{2-}$, $[CoCl_4]^{2-}$ and $[PtCl_4]^{2-}$.
 Defining shape on the basis of the location of X and Z atoms, the total number of species having a square planar shape is
32. The total number(s) of **stable** conformers with **non-zero** dipole moment for the following compound is (are)
- $$\begin{array}{c}
 Cl \\
 | \\
 Br - C - CH_3 \\
 | \\
 Br - C - Cl \\
 | \\
 CH_3
 \end{array}$$
33. Consider the following list of reagents :
 Acidified $K_2Cr_2O_7$, alkaline $KMnO_4$, $CuSO_4$, H_2O_2 , Cl_2 , O_3 , $FeCl_3$, HNO_3 and $Na_2S_2O_3$.
 The total number of reagents that can oxidise aqueous iodide to iodine is
34. Among PbS , CuS , HgS , MnS , Ag_2S , NiS , CoS , Bi_2S_3 and SnS_2 , the total number of **BLACK** coloured sulphides is
35. Consider all possible isomeric ketones, including stereoisomers of MW = 100. All these isomers are independently reacted with $NaBH_4$ (**NOTE**: stereoisomers are also reacted separately). The total number of ketones that give a racemic product(s) is/are

Space for Rough Work

$$\frac{6 \cdot 1023 \times 1.38}{105}$$

$$\begin{array}{r}
 6023 \\
 11138 \\
 148184 \\
 18069x \\
 6023x \\
 \hline
 831174 \\
 \hline
 100000
 \end{array}$$

M =

$$\rho = m/v$$

$$0.4 = \frac{m}{1000}$$

$$m = 400 \text{ gm}$$

$$\frac{3.2 \times 1000}{80 \times 400} = 1$$

$$m = 809$$

$$\rho = 0.4$$

3.2 gm in 1000 sol.

$$\rho = m/v$$

$$0.4 = \frac{m}{1000}$$

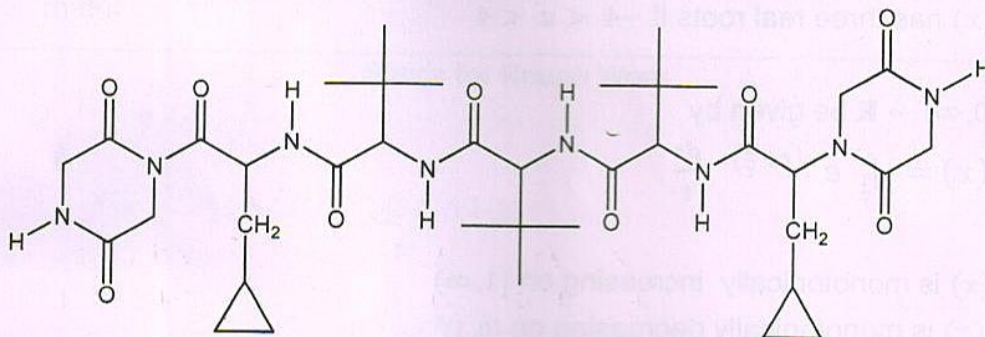
$$400 \text{ gm} = m$$

M = $\frac{3.2 \times 1000}{80 \times 400}$



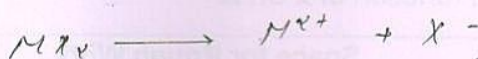
3.2 x 1000

36. MX_2 dissociates into M^{2+} and X^- ions in an aqueous solution, with a degree of dissociation (α) of 0.5. The ratio of the observed depression of freezing point of the aqueous solution to the value of the depression of freezing point in the absence of ionic dissociation is
37. In an atom, the total number of electrons having quantum numbers $n = 4$, $|m_l| = 1$ and $m_s = -1/2$ is
38. A compound H_2X with molar weight of 80 g is dissolved in a solvent having density of 0.4 g ml^{-1} . Assuming no change in volume upon dissolution, the **molality** of a 3.2 molar solution is
39. If the value of Avogadro number is $6.023 \times 10^{23} \text{ mol}^{-1}$ and the value of Boltzmann constant is $1.380 \times 10^{-23} \text{ J K}^{-1}$, then the number of significant digits in the calculated value of the universal gas constant is
40. The total number of **distinct naturally occurring amino acids** obtained by complete acidic hydrolysis of the peptide shown below is



$\alpha = 0.5$

Space for Rough Work



$i \times K_b \times M$

$K_f = \frac{\Delta T_f}{(1-\alpha)}$

$R \times N_A = \frac{6.023 \times 10^{23}}{1.380}$

$R = 1.380 \times 10^{-23}$

Handwritten notes and calculations including circled numbers 1, 2, 3, 4, 5, 6, 7, 8, 9, 10, 11, 12, 13, 14, 15, 16, 17, 18, 19, 20, 21, 22, 23, 24, 25, 26, 27, 28, 29, 30, 31, 32, 33, 34, 35, 36, 37, 38, 39, 40.

$1 + (2-1)\alpha =$

$1 + 1/2 = 3/2 = 1.5$

$R \times N_A = K$

$R = K / N_A \Rightarrow$

$\frac{1.380 \times 10^{-23}}{6.023 \times 10^{23}}$



* 9

(3)

PART III : MATHEMATICS

SECTION – 1 : (One or More Than One Options Correct Type)

This section contains 10 multiple choice questions. Each question has four choices (A), (B), (C) and (D) out of which ONE or MORE THAN ONE are correct.

41. Let $f: (-\frac{\pi}{2}, \frac{\pi}{2}) \rightarrow \mathbb{R}$ be given by

$$f(x) = (\log(\sec x + \tan x))^3.$$

Then

- (A) $f(x)$ is an odd function
 (B) $f(x)$ is a one-one function
 (C) $f(x)$ is an onto function
 (D) $f(x)$ is an even function

42. Let $a \in \mathbb{R}$ and let $f: \mathbb{R} \rightarrow \mathbb{R}$ be given by

$$f(x) = x^5 - 5x + a.$$

Then

- (A) $f(x)$ has three real roots if $a > 4$
 (B) $f(x)$ has only one real root if $a > 4$
 (C) $f(x)$ has three real roots if $a < -4$
 (D) $f(x)$ has three real roots if $-4 < a < 4$

43. Let $f: (0, \infty) \rightarrow \mathbb{R}$ be given by

$$f(x) = \int_{\frac{1}{x}}^x e^{-(t+\frac{1}{t})} \frac{dt}{t}.$$

Then

- (A) $f(x)$ is monotonically increasing on $[1, \infty)$
 (B) $f(x)$ is monotonically decreasing on $(0, 1)$
 (C) $f(x) + f(\frac{1}{x}) = 0$, for all $x \in (0, \infty)$
 (D) $f(2^x)$ is an odd function of x on \mathbb{R}

Space for Rough Work

$$\int_{\frac{1}{x}}^x e^{-(t+\frac{1}{t})} \frac{dt}{t} = e^{-t} e^{-\frac{1}{t}}$$

$$f(1-x) = (\log(\sec(1-x) + \tan(1-x)))^3$$

$$\frac{3[\log(\sec x + \tan x)]^3 [\sec x \tan x + 1]}{\sec x + \tan x} = x[x^4 - 5]$$

$$x[x^2 + \sqrt{5}][x^2 - \sqrt{5}]$$

$$15x^4 - 5 = 0$$

$$x^4 = 1$$

$$x = 1 \pm i$$

$$-1 - 5 + a = f(x)$$

$$-1 + 5 + a =$$

$$a - 4 = f(x)$$

$$a + 4 = f(x)$$



44. For every pair of continuous functions $f, g: [0, 1] \rightarrow \mathbb{R}$ such that

$$\max \{f(x): x \in [0, 1]\} = \max \{g(x): x \in [0, 1]\},$$

the correct statement(s) is(are) :

- (A) $(f(c))^2 + 3f(c) = (g(c))^2 + 3g(c)$ for some $c \in [0, 1]$
- (B) $(f(c))^2 + f(c) = (g(c))^2 + 3g(c)$ for some $c \in [0, 1]$
- (C) $(f(c))^2 + 3f(c) = (g(c))^2 + g(c)$ for some $c \in [0, 1]$
- (D) $(f(c))^2 = (g(c))^2$ for some $c \in [0, 1]$

45. Let M and N be two 3×3 matrices such that $MN = NM$. Further, if $M \neq N^2$ and $M^2 = N^4$, then

- (A) determinant of $(M^2 + MN^2)$ is 0
- (B) there is a 3×3 non-zero matrix U such that $(M^2 + MN^2)U$ is the zero matrix
- (C) determinant of $(M^2 + MN^2) \geq 1$
- (D) for a 3×3 matrix U , if $(M^2 + MN^2)U$ equals the zero matrix then U is the zero matrix

Space for Rough Work

f, g [0, 1]
f(x) = x - [0, 1] f'(x) = 1
 $M^2 = N^4$



46. A circle S passes through the point $(0,1)$ and is orthogonal to the circles $(x-1)^2 + y^2 = 16$ and $x^2 + y^2 = 1$. Then
- (A) radius of S is 8 (B) radius of S is 7
 (C) centre of S is $(-7, 1)$ (D) centre of S is $(-8, 1)$
47. Let M be a 2×2 symmetric matrix with integer entries. Then M is invertible if
- (A) the first column of M is the transpose of the second row of M
 (B) the second row of M is the transpose of the first column of M
 (C) M is a diagonal matrix with nonzero entries in the main diagonal
 (D) the product of entries in the main diagonal of M is not the square of an integer
48. Let \vec{x} , \vec{y} and \vec{z} be three vectors each of magnitude $\sqrt{2}$ and the angle between each pair of them is $\frac{\pi}{3}$. If \vec{a} is a nonzero vector perpendicular to \vec{x} and $\vec{y} \times \vec{z}$ and \vec{b} is a nonzero vector perpendicular to \vec{y} and $\vec{z} \times \vec{x}$, then
- (A) $\vec{b} = (\vec{b} \cdot \vec{z})(\vec{z} - \vec{x})$ (B) $\vec{a} = (\vec{a} \cdot \vec{y})(\vec{y} - \vec{z})$
 (C) $\vec{a} \cdot \vec{b} = -(\vec{a} \cdot \vec{y})(\vec{b} \cdot \vec{z})$ (D) $\vec{a} = (\vec{a} \cdot \vec{y})(\vec{z} - \vec{y})$

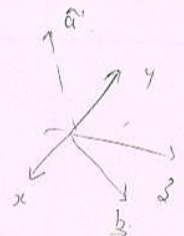
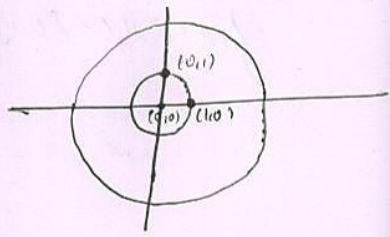
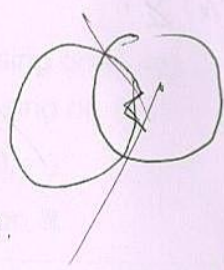
Space for Rough Work

$(x-1)^2 + y^2 = 16$

$x^2 + y^2 = 1$
 $y^2 = 1 - x^2$

$x^2 + 1 - 2x + 1 - x^2 = 16$

$4 - 2x = 16$
 $-2x = 12$
 $x = -6$



$\vec{y} \cdot \vec{a} = 0$

$\vec{a} \cdot [\vec{y} \times \vec{z}] = 0$

$\vec{b} \cdot \vec{y} = 0$

$\vec{b} \cdot [\vec{z} \times \vec{x}] = 0$



49. Let $f: [a, b] \rightarrow [1, \infty)$ be a continuous function and let $g: \mathbb{R} \rightarrow \mathbb{R}$ be defined as

$$g(x) = \begin{cases} 0 & \text{if } x < a, \\ \int_a^x f(t) dt & \text{if } a \leq x \leq b, \\ \int_a^b f(t) dt & \text{if } x > b. \end{cases}$$

Then

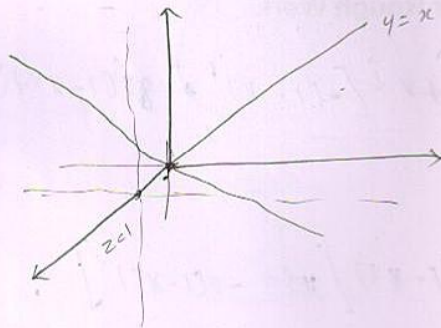
- (A) $g(x)$ is continuous but not differentiable at a
- (B) $g(x)$ is differentiable on \mathbb{R}
- (C) $g(x)$ is continuous but not differentiable at b
- (D) $g(x)$ is continuous and differentiable at either a or b but not both

50. From a point $P(\lambda, \lambda, \lambda)$, perpendiculars PQ and PR are drawn respectively on the lines $y = x, z = 1$ and $y = -x, z = -1$. If P is such that $\angle QPR$ is a right angle, then the possible value(s) of λ is(are)

- (A) $\sqrt{2}$
- (B) 1
- (C) -1
- (D) $-\sqrt{2}$

Space for Rough Work

U.H.L.



SECTION – 2 : (One Integer Value Correct Type)

This section contains 10 questions. Each question, when worked out will result in one integer from 0 to 9 (both inclusive).

51. The value of

$$\int_0^1 4x^3 \left\{ \frac{d^2}{dx^2} (1-x^2)^5 \right\} dx$$

is

$\frac{d^2(x)}{dx^2}$

52. Let $f: \mathbb{R} \rightarrow \mathbb{R}$ and $g: \mathbb{R} \rightarrow \mathbb{R}$ be respectively given by $f(x) = |x| + 1$ and $g(x) = x^2 + 1$. Define $h: \mathbb{R} \rightarrow \mathbb{R}$ by

$$h(x) = \begin{cases} \max \{f(x), g(x)\} & \text{if } x \leq 0, \\ \min \{f(x), g(x)\} & \text{if } x > 0. \end{cases}$$

The number of points at which $h(x)$ is not differentiable is

53. Let $n \geq 2$ be an integer. Take n distinct points on a circle and join each pair of points by a line segment. Colour the line segment joining every pair of adjacent points by blue and the rest by red. If the number of red and blue line segments are equal, then the value of n is

Space for Rough Work

$$\int_0^1 4x^3 \left[\frac{d^2}{dx^2} (1-x^2)^5 \cdot (1-x^2) \right] = -10 \int_0^1 4x^3 \left[-(1-x^2)^4 + 8x^2(1-x^2)^3 \right]$$

$$-10 \int_0^1 4x^3 (1-x^2) (x^2 - 1 - x^4 + 2x^2) - 10 \int_0^1 4x^3 (1-x^2) [x^2 - (1-x^2)^3]$$

$$-40 \int_0^1 x^3 (1-x^2) [3x^2 - 1 - x^4] = -10 \int_0^1 [3x^5 - x^3 - x^7 - 3x^7 + x^5 + x^9]$$

$$-10 \left[\frac{1}{10} - \frac{4x}{2} + \frac{4x^2}{6} - \frac{1}{4} \right]$$

$$-10 \int_0^1 x^9 - 4x^7 + 4x^5 - x^3$$

$$-1 + 5 - \frac{10}{3} + \frac{5}{2}$$

$$= -10 \left[\frac{x^{10}}{10} - \frac{4x^8}{8} + \frac{4x^6}{6} - \frac{x^4}{4} \right]_0^1$$

* 9

24

$$\frac{-6 + 30 - 10 + 15}{6}$$

$$\frac{19(3)}{6} \approx 3$$



54. The slope of the tangent to the curve $(y - x^5)^2 = x(1 + x^2)^2$ at the point (1, 3) is

55. Let \vec{a} , \vec{b} , and \vec{c} be three non-coplanar unit vectors such that the angle between every pair of them is $\frac{\pi}{3}$. If $\vec{a} \times \vec{b} + \vec{b} \times \vec{c} = p\vec{a} + q\vec{b} + r\vec{c}$, where p, q and r are scalars, then the value of $\frac{p^2 + 2q^2 + r^2}{q^2}$ is

56. Let a, b, c be positive integers such that $\frac{b}{a}$ is an integer. If a, b, c are in geometric progression and the arithmetic mean of a, b, c is $b + 2$, then the value of

$$\frac{a^2 + a - 14}{a + 1}$$

is

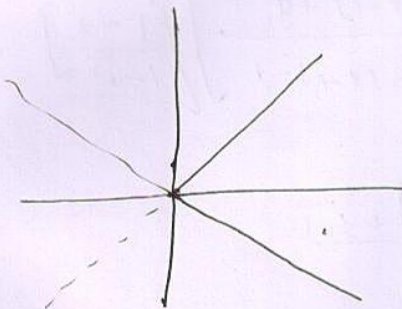
Space for Rough Work

$$f(x) = x + 1$$

$$f(x) = -x + 1$$

$$f'(x) = 1$$

$$f'(x) = -1$$



$$y = 3$$

$$x = 1$$

$$g(x) = x^2 + 1$$

$$g'(x) = 2x$$



$$\textcircled{2} \rightarrow f'(x) = -1$$

$$g(x) (-\infty, 0]$$



$$\textcircled{3} \rightarrow f'(x) = 1 \quad x > 0$$



$$g(x) [0, \infty)$$

$$(y - x^5)^2 = x(1 + x^2)^2$$

$$2(y - x^5) [y' - 5x^4] = (1 + x^2)^2 + 2x(1 + x^2)x^2$$

$$2(3 - 1)(y' - 5) = 4 + 2(2)(2)$$

$$c = \sqrt{ab}$$

$$b = \frac{a+c}{2} = b+2$$

$$x < 0$$

$$2(y' - 5) = 4 + 8$$

$$y' = 8$$

$$y' - 5 = 3$$



57. Let $f: [0, 4\pi] \rightarrow [0, \pi]$ be defined by $f(x) = \cos^{-1}(\cos x)$. The number of points $x \in [0, 4\pi]$ satisfying the equation

$$f(x) = \frac{10-x}{10}$$

is

58. The largest value of the non-negative integer a for which

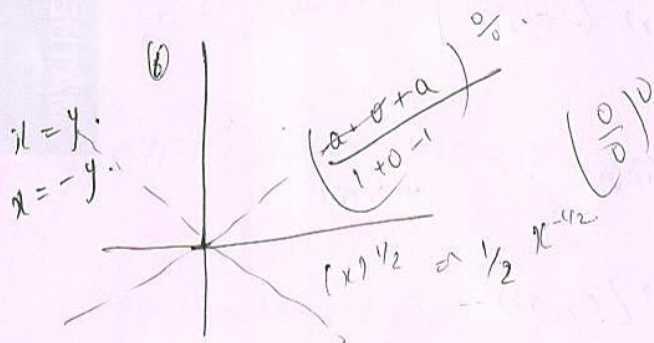
$$\lim_{x \rightarrow 1} \left\{ \frac{-ax + \sin(x-1) + a}{x + \sin(x-1) - 1} \right\}^{\frac{1-x}{1-\sqrt{x}}} = \frac{1}{4}$$

is

59. For a point P in the plane, let $d_1(P)$ and $d_2(P)$ be the distances of the point P from the lines $x - y = 0$ and $x + y = 0$ respectively. The area of the region R consisting of all points P lying in the first quadrant of the plane and satisfying $2 \leq d_1(P) + d_2(P) \leq 4$, is

60. Let $n_1 < n_2 < n_3 < n_4 < n_5$ be positive integers such that $n_1 + n_2 + n_3 + n_4 + n_5 = 20$. Then the number of such distinct arrangements $(n_1, n_2, n_3, n_4, n_5)$ is

Space for Rough Work



$$\left[\frac{-ax + \sin(x-1) + a}{x + \sin(x-1) - 1} \right]^{\frac{1-x}{1-\sqrt{x}}}$$

$d_1(P) + d_2(P) \leq 4$

$$\lim_{x \rightarrow 1} \left(\frac{-a + \cos(x-1)}{1 + \cos(x-1)} \right)^{\frac{1}{\sqrt{x}}}$$

$$\left(\frac{-a + 1}{2} \right)^2 = 1/4$$

26
 $-8a + 8 = 2$
 $-8a = -6$
 $a = 3/4$



D. Marking Scheme

16. For each question in **Section 1**, you will be awarded **3 marks** if you darken all the bubble(s) corresponding to the correct answer(s) and **zero mark** if no bubbles are darkened. **No negative** marks will be awarded for incorrect answers in this section.
17. For each question in **Section 2**, you will be awarded **3 marks** if you darken only the bubble corresponding to the correct answer and **zero mark** if no bubble is darkened. **No negative** marks will be awarded for incorrect answer in this section.

Appropriate way of darkening the bubble for your answer to be evaluated :

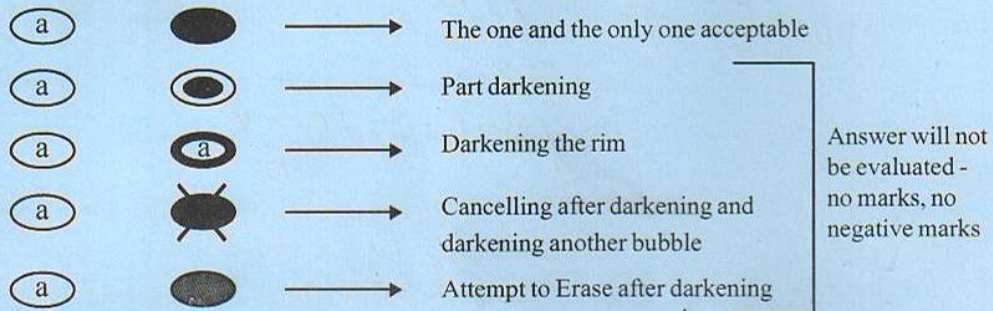


Figure-1 : Correct way of bubbling for valid answer and a few examples of invalid answers. Any other form of partial marking such as ticking or crossing the bubble will be considered invalid.

5	0	4	5	2	3	1
0	0	0	0	0	0	0
1	1	1	1	1	1	1
2	2	2	2	2	2	2
3	3	3	3	3	3	3
4	4	4	4	4	4	4
5	5	5	5	5	5	5
6	6	6	6	6	6	6
7	7	7	7	7	7	7
8	8	8	8	8	8	8
9	9	9	9	9	9	9

Figure-2 : Correct Way of Bubbling your Roll Number on the ORS. (Example Roll Number : 5045231)

Name of the Candidate	Roll Number							
<i>Bhovesk Sankrivand.</i>	<table border="1" style="display: inline-table; border-collapse: collapse;"> <tr> <td style="width: 20px; height: 20px; text-align: center;">1</td> <td style="width: 20px; height: 20px; text-align: center;">0</td> <td style="width: 20px; height: 20px; text-align: center;">4</td> <td style="width: 20px; height: 20px; text-align: center;">9</td> <td style="width: 20px; height: 20px; text-align: center;">0</td> <td style="width: 20px; height: 20px; text-align: center;">2</td> <td style="width: 20px; height: 20px; text-align: center;">3</td> </tr> </table>	1	0	4	9	0	2	3
1	0	4	9	0	2	3		
I have read all instructions and shall abide by them.	I have verified all the information filled by the candidate.							
 Signature of the Candidate	 Signature of the Invigilator							